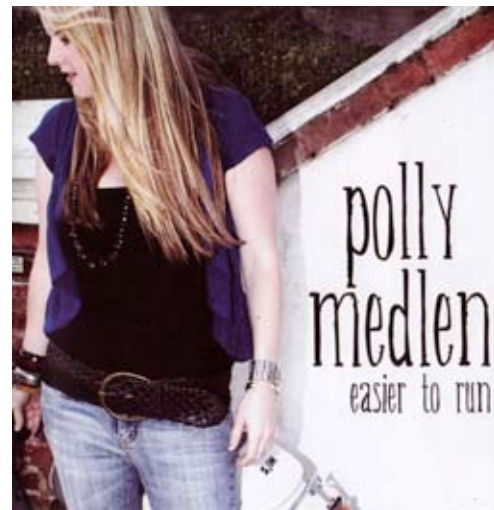


polly medlen

When you hear Polly Medlen's smoky vocals and emotion charged songs your next sentence is going to be "Where can I get a copy of this!"



BIO

Polly Medlen is a brand new artist entering country music with her debut album '**Easier to Run**'. Polly hails from Williams, Western Australia and her original music draws mostly from her country / roots influences and experiences growing up in rural W.A. Her music reflects her love of the 'alternative road' and her album crosses musically through country, folk and rock while her lyrics draw insightful images from her life and times. Her songs have that rare quality of instant rapport with audiences of all types and ages.

Reminiscent of a young Kasey Chambers or Patty Griffin, Polly is a genuine new voice who sounds like she's been here the whole time.

A unique sound – she has a voice that becomes addictive to listen to – there's a certain tone, a wonderful ability to bend notes- and that little catch that contains so much emotion" Sue Jarvis – Capital News.

After attending the Australian College of Country Music in 2005, Polly spent a year travelling around Australia with her best friend Rat, working, writing and playing along the way, and it was the inspiration she drew from life on the road and attending music festivals like Tamworth / Gympie and the Blues and Roots, that she finally decided to come home, knuckle down, bite the bullet and create her debut album "**Easier to Run**" with Roger Corbett (The Bushwackers) at his renowned "The Valley Studios" in Sydney's Blue Mountains.

This decision paid off for Polly, and within the year she picked up the 2006 WAM Country Song of The Year Award and had the opportunity to support true greats like Ian Moss (Cold Chisel) and Shane Howard and Neil Murray on the legendary "Two Songman Tour".

Early 2007 saw Polly promoting her album '**Easier to Run**' with the release of her debut single "Take me with you" being embraced by country radio with more nominations and promising prospects for carving out a unique sound on the Australian alternative country music landscape.

NEWS

Polly's song 'Bigger Heart' was chosen for selection on the new 'Sounds like Cafe' compilation album lined up the likes off Sarah Blasko, Angie Hart, Angus & Julia Stone, Karl Broadie, and Fiona Kernaghan.

With the 2007 WAM song of year award nominations having just been announced, again Polly is in the running for country song of the year with her first single off the album - 'Take me with You'. With an extra scoop, Polly is also nominated for an additional two songs in the regional song of the year category for "End of line" & "Two Months". Polly with also perform at the awards show.

MEDIA CONTACT

Amanda O'Bryan, The Valley Studio. Phone: 02 4751 7099 Email: amanda@valleystudio.com.au

www.pollymedlen.com.au www.myspace.com/pollymedlen

